

## CCTV Factory-Automation Lenses



- Standard Lenses
- Macro Zoom Lenses
- Telecentric Lenses
- Varifocal Lenses
- Megapixel Lenses

## Bus Mastering Framegrabber



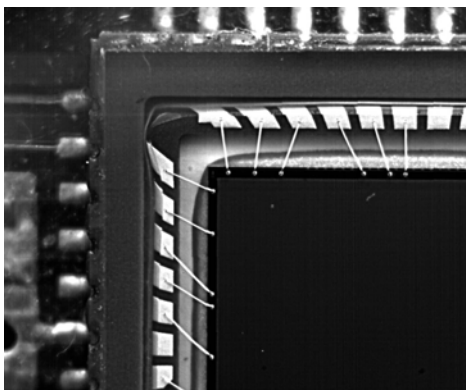
- Philips TriMedia™ video processor
- 16 MB Frame Buffer
- NTSC and PAL
- CCIR square pixel capture resolution
- Area of Interest
- I/O Trigger
- Optional SDK



[WWW.EHD.DE](http://WWW.EHD.DE)

## CCD

*Charged Coupled Device*



[WWW.EHD.DE](http://WWW.EHD.DE)

EHD imaging GmbH  
Zum Rennplatz 15  
49401 Damme  
Telefon: 05491-2090  
Fax: 05491-2098  
E-Mail: [info@ehd.de](mailto:info@ehd.de)



## 1/2" CCD Camera

*High Sensitive*

Monochrome

RS-485 control



- Sony 1/2" 795 x 596 Pixel Sensor
- 0.0002 lx min. Sensitivity
- AGC/ MGC
- Ext./Int. Synchronisation
- RS-485 Interface
- Digital 2X Zoom
- Mirror Function
- Auto iris
- Backlight compensation
- Alarm Out
- Picture Freeze
- Power 12Vdc & 24Vac
- Up to 128X Frame Integration

# EHD-12V6HC-EX monochrome

## Specification:

Image Sensor	1/2" Sony
Number of Pixel	795(H) x 596(V)
Sync. System	Internal or EXT-VBS
Mini. Illum.	0,0002x /F1.2, 5600K
Resolution	600 TVL
Gain Control	AGC On/Off / 0-18 dB
S/N Ratio	Typ. 60 dB / AGC Off
Electronic Shutter	1/50 - 1/120.000 s
Auto Iris	A.E.S/DC/Video
Video Out	Composite 1.0V p-p
Operation Temp.	-20°C to +50°C
Humidity	85% RH
Power Supply	12 Vdc & 24Vac / 5W

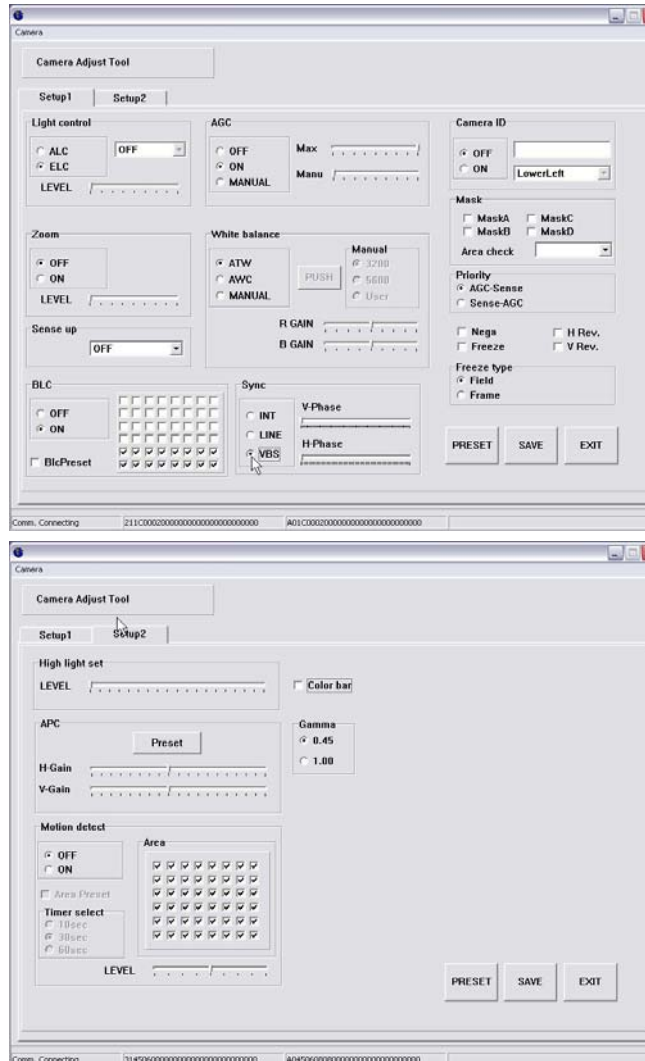
## Selectable by OSD :

Flickerless	Mirror
B.L.C.	Digital Zoom 2X
Negative Image	Masking Area
AGC Gain Adjustment	Picture Freeze On/Off/Trigg.
Motion Detector	Alarm Out
RS-232 Interface	Picture Enhance
High Light Compression	Color Bar On/Off
Gamma Correction 0.45/1.0	

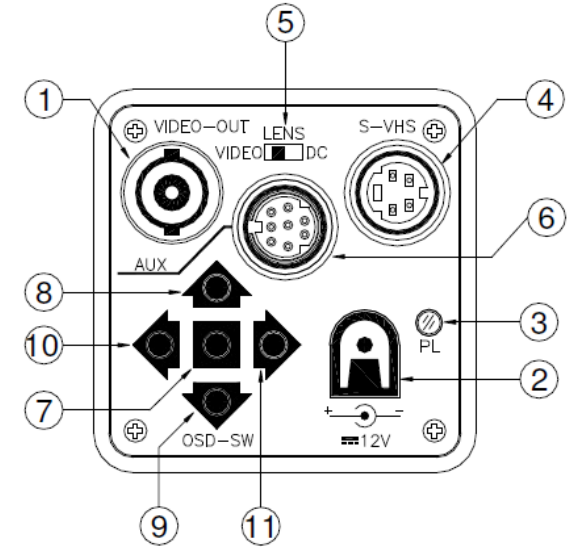
# EHD-12V6HC-EX with digital Signalprocessor



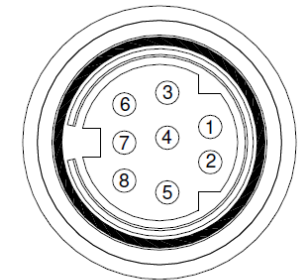
## RS-485 Software Control



# EHD-12V6HC-EX Rear Panel



1	VIDEO OUTPUT
2	POWER INPUT
3	POWER ON INDEX LED
4	S-VHS Y/C OUTPUT
5	AUTO IRIS LENS SELECT SW.
6	AUX CONNECTOR
7	OSD-SW "ENTER"
8	OSD-SW "UP"
9	OSD-SW "DOWN"
10	OSD-SW "LEFT"
11	OSD-SW "RIGHT"



P1	485+	RS-485 Connector TO PC
P2	GND	
P3	485-	Open collector output Max sink DC50V/30mA
P4	GND	
P5	ALARM-OUT	Current Loop DC12V/10mA
P6	GND	
P7	FREEZE Trigger-IN	
P8	GND	